

Trusted Relationships Project – North Yorkshire and York

*'Building stronger relationships,
achieving positive outcomes'*



&



Background

- Research into the experience of children and young people who have been abused or exploited has found that they often lacked a consistent, trusted adult in their lives
- Early Intervention Foundation Review - also found that a trusted relationship with an adult is a significant protective factor for Young People
- The £11 million Trusted Relationships Fund was launched by the Home Office in 2018 - provided opportunity for local authorities to apply for funding to deliver and evaluate initiatives to improve support to young people at risk of exploitation and abuse.



Project Background:

A reoccurring theme in research into the experience of children and young people who have been abused or exploited is that they lacked a consistent, trusted adult in their lives with whom they could share concerns about their safety and wellbeing and Young people often cite the lack of a 'Trusted Relationship' (either in their family or community network or a professional) as a factor which led to harm escalating in their lives.

A review carried out by the Early Intervention Foundation, also found that a trusted relationship with an adult is a significant protective factor and an essential part of programmes to support vulnerable children. It found that this kind of social support can help children avoid risky situations, as well as help them overcome adverse circumstances in their lives.

On the back of this, the £11 million Trusted Relationships Fund was launched by the Home Office in 2018, which provided opportunity for local authorities to apply for funding to deliver and evaluate initiatives to improve support to young people at risk of exploitation and abuse

Successful North Yorkshire & York Bid

- Joint bid between North Yorkshire County Council and City of York Council
- Multi-agency collaborative approach to identification and support for children and young people who are **primarily at risk of or subject to Child Criminal Exploitation** (including County Lines, CSE and Modern Slavery)
- Ambition to foster positive, persistent and long-term relationships and develop protective factors that build resilience
- A 'Trusted Relationship' will be identified for each young person
- Ambition to work with approx. 240 children and young people over the 2019/20 – 2021/22 period



In the summer of 2018 a joint North Yorkshire County Council and City of York Council application was submitted to the Home Office and the North Yorkshire and York programme was selected as one of 11 projects nationally who were successful in being allocated 'Trusted Relationships' funding.

The North Yorkshire and York project is a multi-agency collaborative approach to identification and support for children and young people (principally aged 10 – 17) who are **primarily at risk of or subject to Child Criminal Exploitation** (including County Lines, CSE and Modern Slavery)

Core to the delivery model is the ambition to foster positive, persistent and long-term relationships and develop protective factors that build resilience in this highly vulnerable population

A 'Trusted Relationship' will be identified for each young person help to build resilience, self-esteem and self-efficacy

Over the course of the 2019/20 – 2021/22 period, it is the ambition to identify and work with approx. 240 children and young people through the project (across both local authority areas)

TR Delivery Plan & Support Offer and One Minute Guide



The TR project aims to supplement the work of other agencies/services involved with the case and will not have 'case-holding' responsibility



The Trusted Relationships 'One Minute Guide' provides a very quick overview of the programme. In addition, The Trusted Relationships Delivery Plan and Support Offer document sets out the delivery model, packages of support and key interventions/approaches that will be utilised across the different strands of Trusted Relationships project within North Yorkshire and York. These documents also outline the pathway in order to access support through Trusted Relationships project.

Both documents are available on the North Yorkshire Safeguarding Children's Partnership Website: www.safeguardingchildren.co.uk

All partners must retain 'accountability' for the children, young people and families that we support. **The Trusted Relationships project aims to supplement the work of other agencies/services involved with the case and will not have 'case-holding' responsibility. Cases must continue to be open to a Children and Families Service for Trusted Relationships to remain involved – this will ensure the Children and Families Service retain oversight and case-holding responsibility.**

At the very core of the North Yorkshire and York Trusted Relationships project is a relationship-based practice model. The project utilises a strengths-based and solution focused approach and offers a range of accredited and evidenced informed interventions including Restorative Practice and Motivational Interviewing.

Two Key Strands of Support

Strand 1

- Support for C/YP who are identified as being **at risk of CCE** (and exploitation generally)
- Delivery through **Restorative Practice Relief Workers**:
 - Young people aged 16 - 24 who are trained to facilitate restorative practice
 - Have had previous involvement with Children and Families Services
- Would become the 'Trusted Relationship' with the C/YP

Strand 2

- Support for C/YP who are identified as being **subject to CCE** (and exploitation generally)
- Delivery through **Family Network Coordinators (FNC)**
- Network / family finding approach:
 - Establish long-term 'Trusted Relationships' with adults who will support and maintain positive contact with the young person beyond 18
- Trained to effectively deliver a continuum of restorative approaches



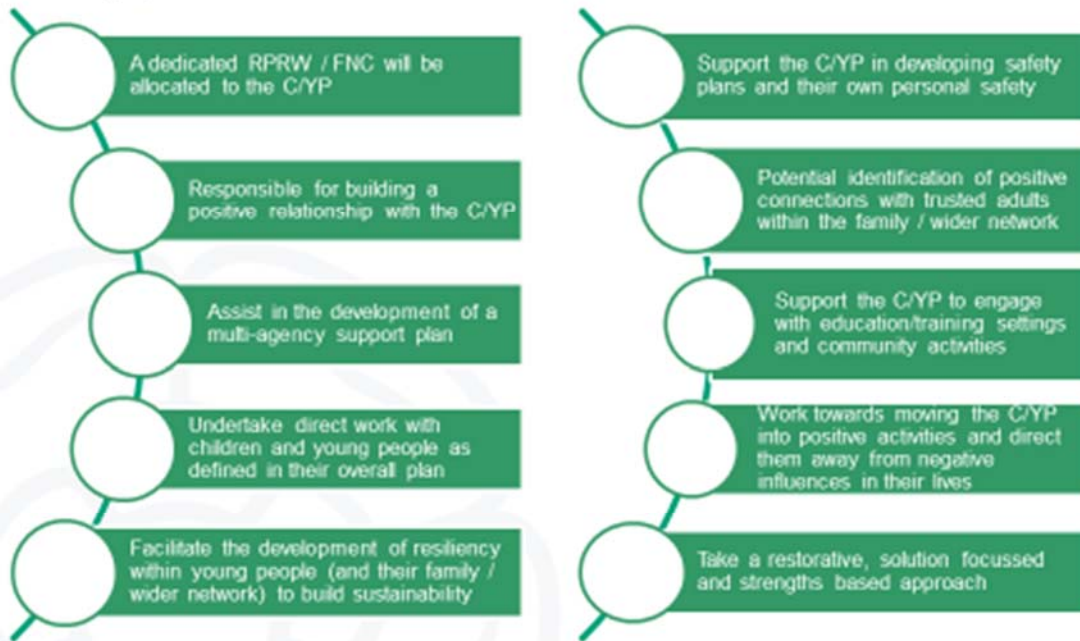
The project will deliver flexible packages of support to foster positive, long-term relationships, promote protective factors and build resilience in children/young people at risk of or subject to exploitation and enable vulnerable young people and families to achieve positive and sustained outcomes.

The project is split in to two key strands of support:

Strand 1: Support for C/YP who are **at risk of CCE** and exploitation generally. In North Yorkshire delivery is through Restorative Practice (RP) Workers, who are young people aged 16 - 24 who are trained to facilitate restorative practice. The primary role of the RP Worker is to develop a 'Trusted Relationship' to help build resilience, self-esteem and self-efficacy young people vulnerable to CCE and exploitation generally. The RP Workers are appropriately trained and supervised and the relevant operational manager is responsible for matching the young people to suitable RP Workers.

Strand 2: Network / family finding approach for young people **identified as being subject to CCE** and exploitation generally. **Delivery within North Yorkshire is through 1.5 FTE Family Network Coordinators (FNCs)** who are trained to effectively deliver a continuum of restorative approaches including Restorative Practice and Family finding to support children, young people and their families. The FNCs will be responsible for building a positive relationship with the young person, the identification of connections with trusted adults, referral to the Family Group Conference / Lifelong Links process if necessary, and to develop resiliency within young people and their family / wider network to build sustainability post-conference.

Support Offer Across the 2 Strands



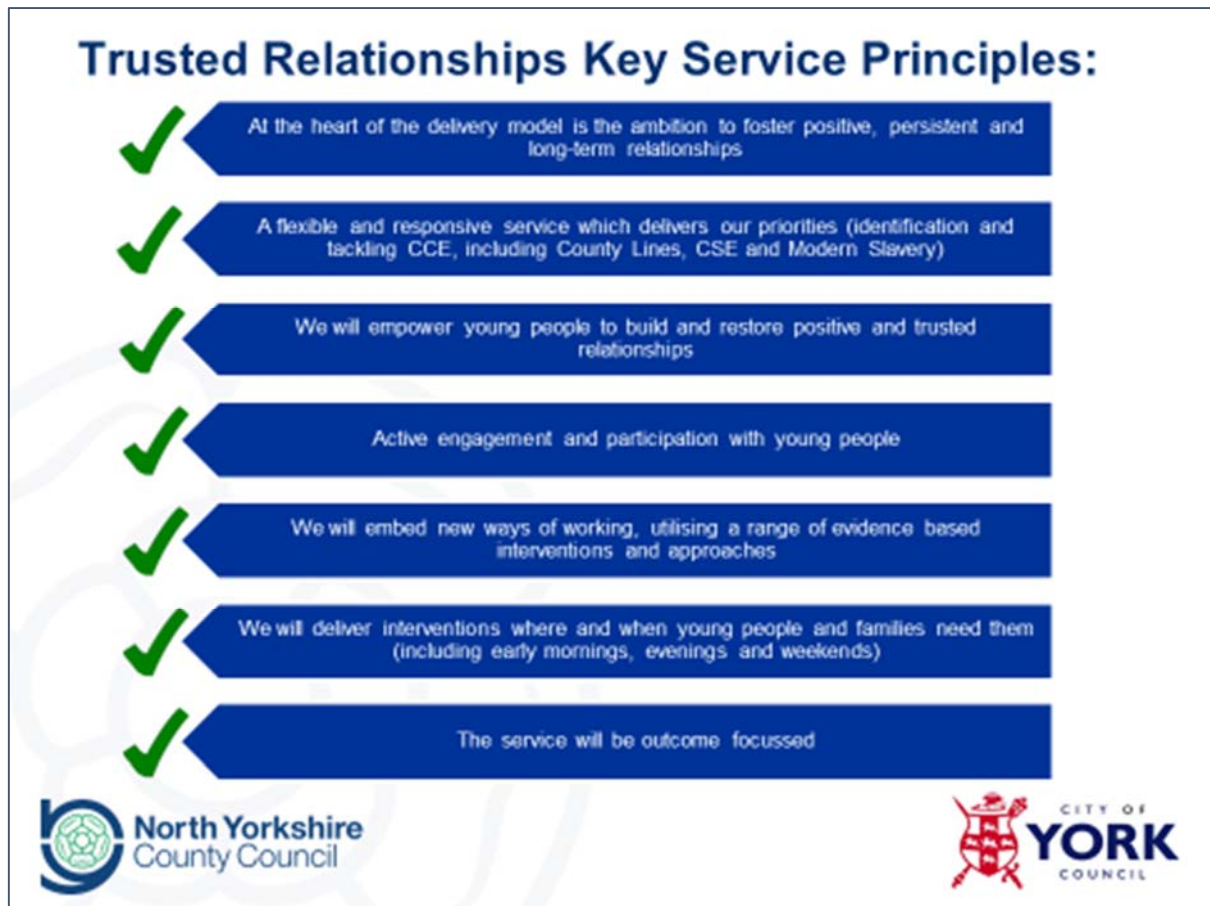
See the TR Delivery Plan & Support Offer for more information



The following provides a summary of the support offer across the two strands for children, young people and their families as part of the Trusted Relationships project within North Yorkshire and York:

- A dedicated RP Worker / FNC will be allocated to the child/young person
- Responsible for building a positive relationship with the child/young person
- Assist in the development of a multi-agency support plan
- Undertake direct work with children and young people as defined in their overall plan
- Facilitate the development of resiliency within young people (and their family / wider network) to build sustainability
- Support the child/young person in developing safety plans and their own personal safety
- Potential identification of positive connections with trusted adults within the family / wider network
- Support the child/young person to engage with education/training settings and community activities
- Work towards moving the child/young person into positive activities and direct them away from negative influences in their lives
- Take a restorative, solution focussed and strengths based approach

Further information relating to the support offer is contained within the Trusted Relationships Delivery Plan and Support Offer document.



The Support Offer document also defines a set of key service principles which are embedded in to the project to deliver change and achieve positive outcomes for children at risk of or subject to exploitation.

The different strands of the Trusted Relationships project are underpinned by the following service principles:

- At the heart of the delivery model is the ambition to foster positive, persistent and long-term relationships and develop protective factors that build resilience in children/young people at risk of or subject to exploitation
- A flexible and responsive service which delivers our priorities (identification and tackling CCE, including County Lines, CSE and Modern Slavery)
- We will empower young people to build and restore positive and trusted relationships
- Active engagement and participation with young people is the foundation of the work and the different strands of the Trusted Relationships project will ensure that the voice of the child or young person is embedded in work undertaken
- The different strands of the project will embed new ways of working, utilising a range of evidence based interventions and approaches
- We will deliver interventions where and when young people and families need them (including early mornings, evenings and weekends)
- The service will be outcome focussed
- We will build on family and network strengths, retain a solution focus and enable effective support plans to be developed to secure sustainable outcomes
- The service will deliver value for money

Core Intended Outcomes



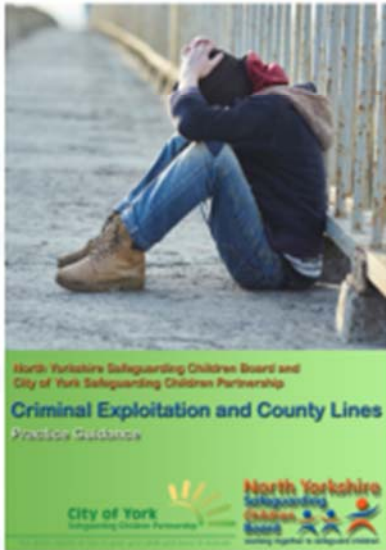
Through the Trusted Relationships project we aim to deliver a wide-ranging set of positive outcomes, whilst also implementing improved integrated working arrangements and practice in terms of awareness, identifying and addressing CCE (including County Lines, CSE and Modern Slavery) across the partnership workforce.

Core outcomes of the local Trusted Relationship project are to achieve the following in vulnerable young people:

- Improved Relationships
- Improved Safety
- Increased Engagement in Education, Training and Employment (ETE)
- Improved Emotional and Physical Wellbeing
- Reduced Criminal Activities

An overarching aim of local Trusted Relationships projects is to strengthen the evidence base on what works to protect young people from exploitation and abuse to improve services over the course of the programme and beyond. A full outcome and performance framework is being developed for the North Yorkshire and York project to ensure there is an effective evaluation of local programme delivery. We are also liaising closely with Home Office's independent evaluation partner (Behavioural Insights Team) to robustly monitor and evaluate outcomes. We are collating required data and evidence to enable the independent partner to effectively evaluate the approach, and use this data to build a business case that assesses the future value of this model of working and whether the project is effective in delivering cost savings across the partnership.

Criminal Exploitation and County Lines – Practice Guidance – Available on Safeguarding Board website



The nomination / referral process for the TR project has been fully integrated in to the designated Child Exploitation pathway for North Yorkshire:

- Multi-Agency Screening Team (MAST) Child Exploitation process

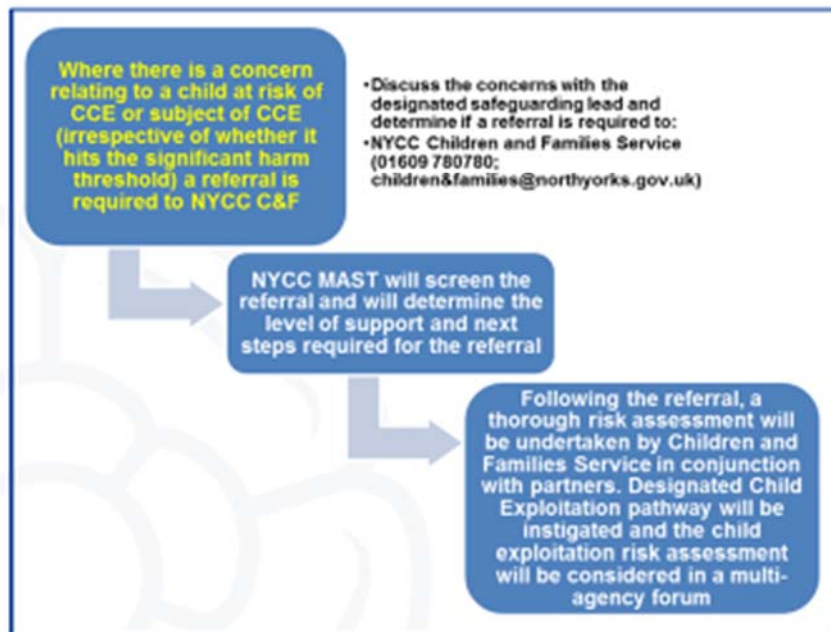


The North Yorkshire and City of York 'Criminal Exploitation and County Lines – Practice Guidance' was launched earlier in 2019 and is available on the safeguarding partnership website.

In order to avoid the implementation of parallel pathways and ensure consistency of approach, the nomination/referral process for the Trusted Relationships programme has been fully integrated within the designated Child Exploitation process. Within North Yorkshire this is the Multi-Agency Screening Team (MAST) Child Exploitation process.

As such, as a precursor to making a Trusted Relationships nomination/referral, the case-holder must first route the case through the MAST Child Exploitation pathway, which requires the case to become open to a Children and Families (C&F) service to complete a thorough child exploitation risk assessment in conjunction with partners.

Where there is a concern relating to a child at risk / subject to CCE:



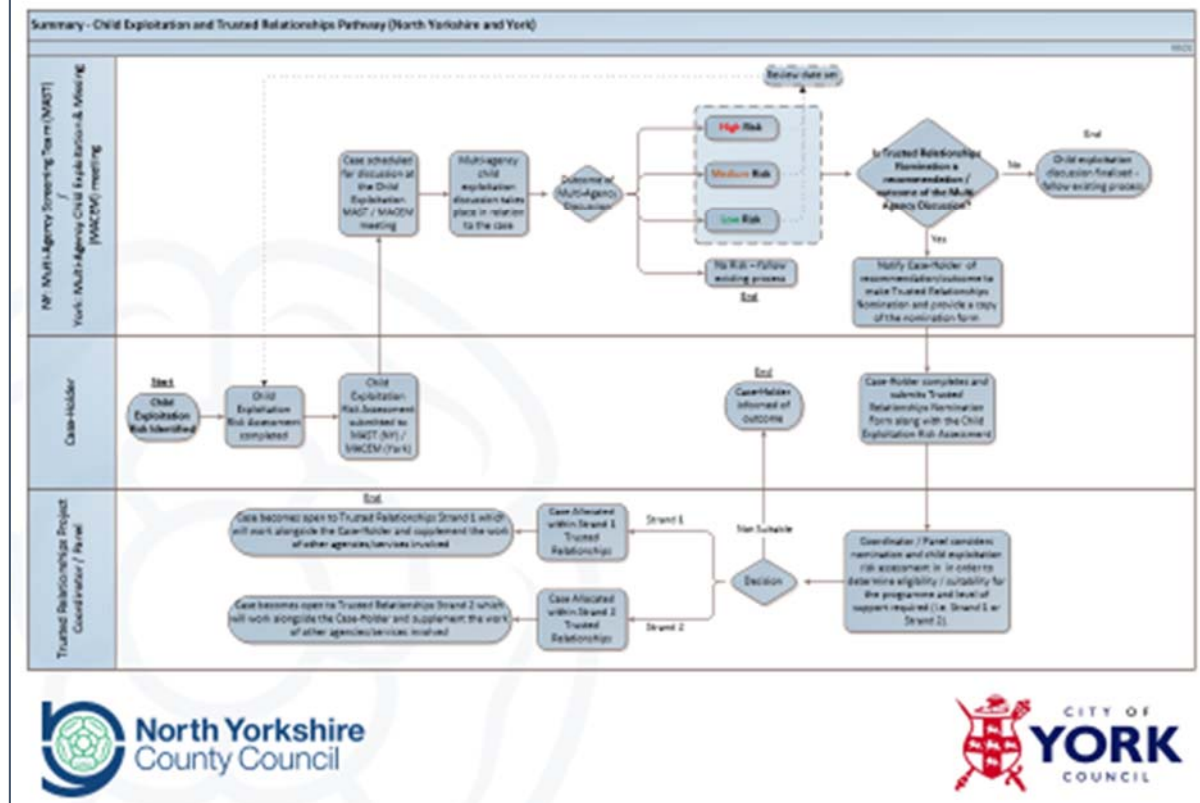
Within the safeguarding partnership Criminal Exploitation and County Lines practice guidance, the following process is described:

- Where there is a concern relating to a child at risk of CCE or subject of CCE (irrespective of whether it hits the significant harm threshold) a referral is required to NYCC Children and Families Service
- NYCC MAST will screen the referral and will determine the level of support and next steps required for the referral
- Following the referral, a thorough risk assessment will be undertaken by Children and Families Service in conjunction with partners. If appropriate, the designated Child Exploitation pathway will be instigated and the child exploitation risk assessment will be considered in a multi-agency forum, where Trusted Relationships will be considered as one potential support option.

Note: Agencies external to the Children and Families Service will not be able to submit a nomination/referral directly to the Trusted Relationships programme, as it will essentially bypass the child exploitation pathway for North Yorkshire.

The process on the following page describes how the referral process for Trusted Relationships has been integrated into the MAST Child Exploitation pathway

Accessing support through the TR project



As part of the MAST Child Exploitation process, Children and Families case-holders will be required to complete a child exploitation risk assessment, and will therefore not be specifically requesting Trusted Relationships support from the outset. The child exploitation risk assessment will be discussed in a multi-agency forum (MAST Child Exploitation Meeting) who will make recommendations in relation to the case, and 'Trusted Relationships' will be considered as one potential support option. If an outcome of the MAST discussion is that the case would be suitable for and would benefit from Trusted Relationships support, the case-holder will then be notified and will be asked to complete a Trusted Relationships nomination form. Following submission of the nomination form by the case-holder, the case will be considered by the Trusted Relationships Coordinator/Panel, who, if appropriate will allocate to case to receive either Strand 1 or 2 support.

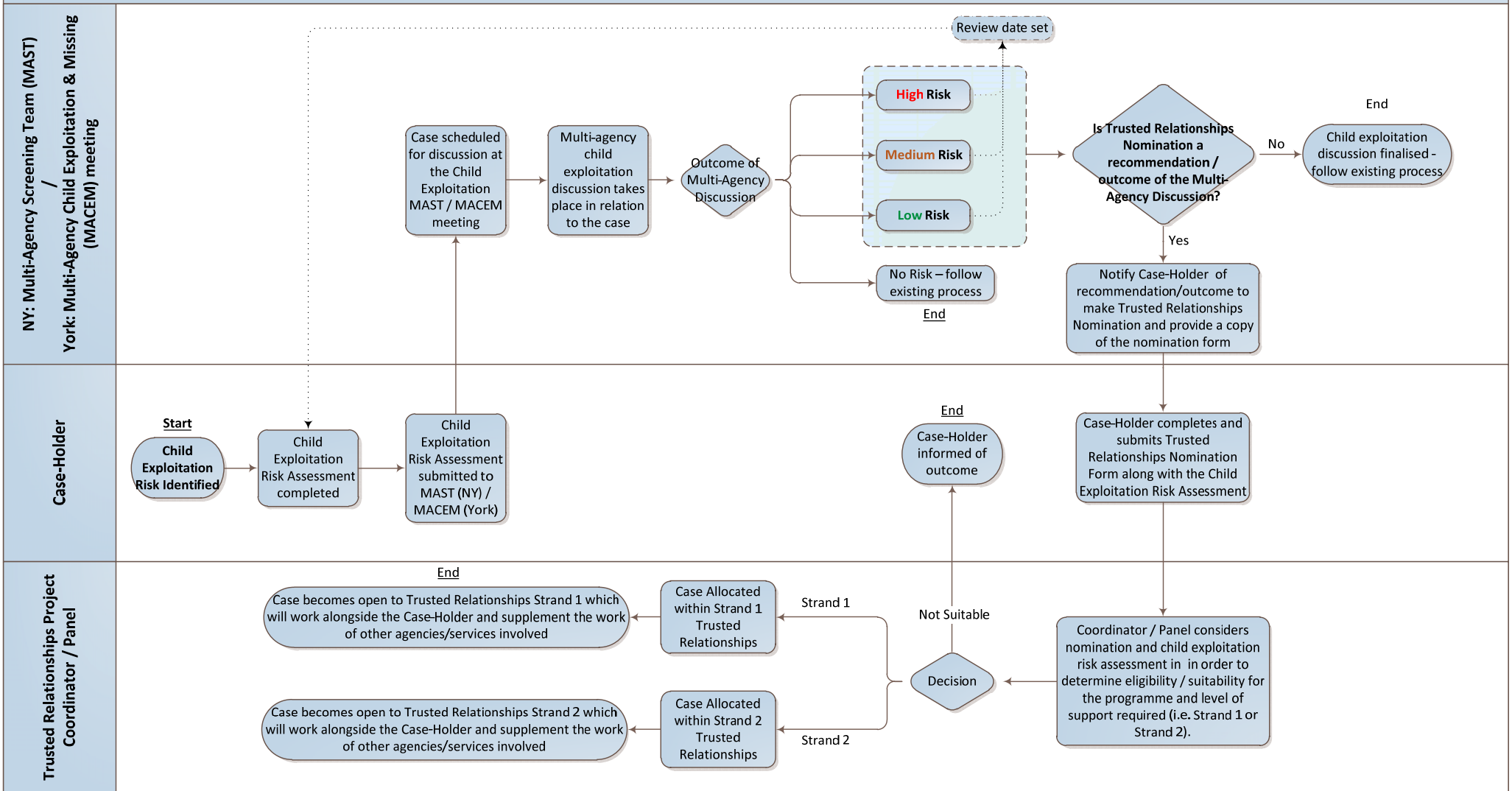
This pathway/approach has been implemented to promote consistency in terms of how cases are considered, nominated and then allocated to the Trusted Relationships project. It will also ensure there is multi-agency agreement as to the appropriateness of Trusted Relationship support in the context of a range of support options / interventions available to children and young people vulnerable to or subject to different forms of exploitation. It is also important that the Trusted Relationships project is not viewed in isolation, but instead is seen across the partnership as one of a number of services which aims to achieve positive outcomes for young people at risk of or subject to exploitation.

Note: Throughout the period of receiving support from Trusted Relationships, the case must remain open to a Children and Families Service (e.g. Social Worker, Children and Families Worker) in order that they retain oversight and case-holding responsibility.

A larger version of the process diagram has been included on the following page.

Summary - Child Exploitation and Trusted Relationships Pathway (North Yorkshire and York)

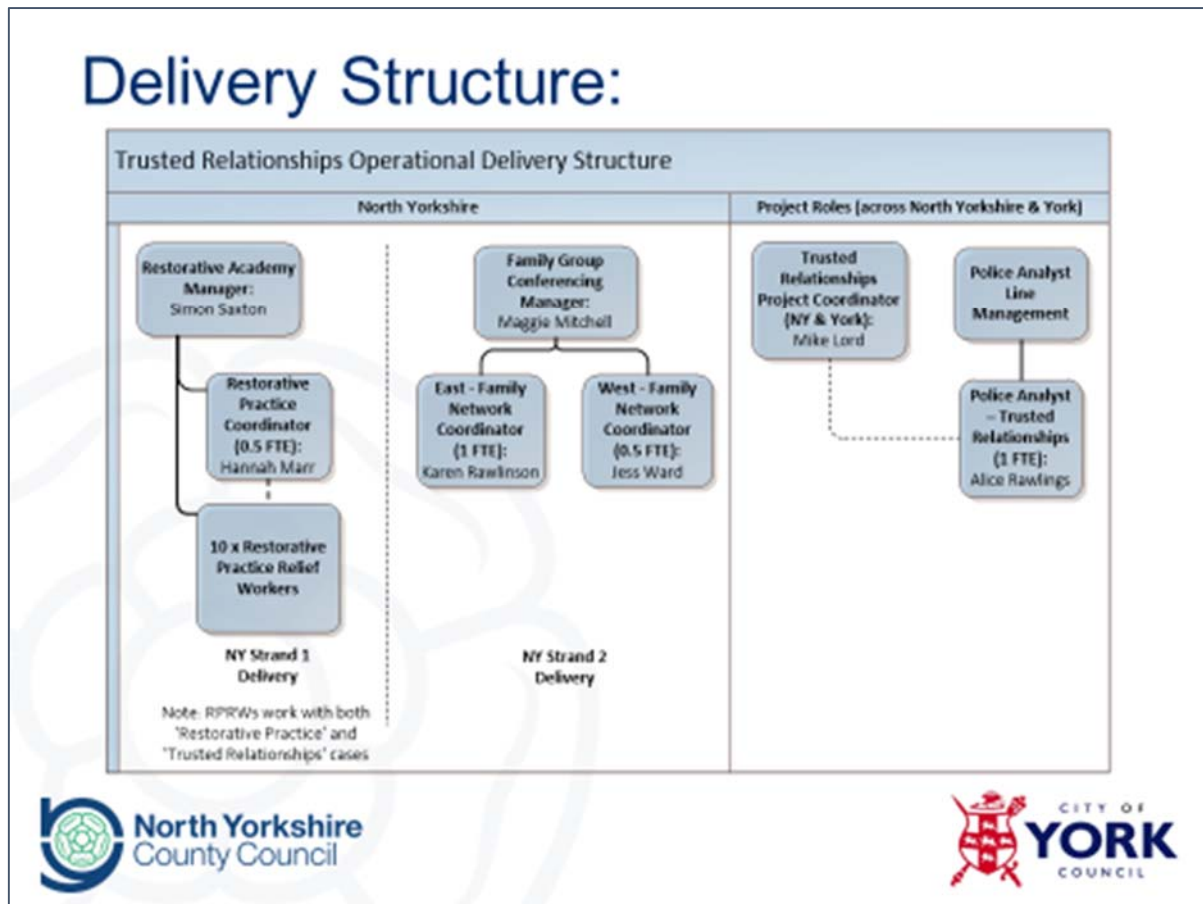
v0.01



Strand 1: Support for children & young people who are **vulnerable or at risk of CCE** (including County Lines, Child Sexual Exploitation (CSE) and Modern Slavery) – in North Yorkshire delivery through Restorative Practice Relief Workers, in City of York delivery through Volunteer Mentors

Strand 2: Network / family finding approach for young people identified as being **subject to CCE** (including County Lines, Child Sexual Exploitation (CSE) and Modern Slavery) – delivery through Family Network Coordinator(s)

Delivery Structure:



The Operational Delivery Structure for the two key strands of the project are summarised on this slide.

This shows that within Strand 1 there are currently a group of 10 Restorative Practice Relief Workers who are able to take cases as part of the Trusted Relationships project. (Note: the Restorative Practice Workers work with both 'Restorative Practice' and 'Trusted Relationships' cases.

Within Strand 2, there is 1.5 FTE Family Network Coordinator posts – 1 FTE covering the east of the county and 0.5 FTE for the west of the county. It has also been agreed that the Restorative Practice Coordinator (Hannah Marr) may also be able to take a small number of Strand 2 cases, which will increase the overall capacity of the Strand 2 service.

In addition to the above, there are a couple of Project Roles for Trusted Relationships which operate across North Yorkshire and York:

- a) The Trusted Relationships Project Coordinator post (held by Mike Lord), responsible for the implementation of the project across the North Yorkshire and City of York local authority areas
- b) A dedicated Police Analyst role (held by Alice Rawlings) and a key function of the post is to utilise partnership intelligence to identify cases which are not currently open to Children and Families Services, but which appear to be at risk of exploitation and may therefore benefit from support through the Trusted Relationships project. Cases which the Police Analyst post identifies will be referred to MAST multi-agency consideration.

Questions?



&

